



# 2020-2021 ANNUAL REPORT



# A LETTER FROM TAMI AND LISA

If there was one word that captures our 2020-2021 year, it is resilience. In a history that spans more than a century, we have, of course faced adversity and managed change, and this year certainly tested both our strength and our resolve. Not surprisingly, our volunteers, Girl Scout families and staff team met each challenge with the courage, confidence, and character that we strive to instill in our girls.

As the year began, we were optimistic that the pre-pandemic world we knew was just around the corner. Schools began to resume in-person learning and virtual troop meetings started to be replaced by socially distanced and outdoor meetings... it was so wonderful to see our Girl Scouts coming together after so many months. Programs that had been on hiatus came back to life and we brought together the best of our in-person and virtual offerings to engage our Girl Scouts. Revenue shortfalls that had impacted many councils last year reached Girl Scouts of Southeast Florida this year. This led to some difficult decisions to reduce costs and to position us for recovery over the next few years. The commitment of our small team was tested as we said goodbye to some of our incredible colleagues and worked to restructure to minimize the impact on our membership. And along with so many of you, we mourned the loss of our Camp Nocatee Ranger, Steve Woodby, who had been part of our Girl Scout family for six years.

While the year was not without challenge, there were also countless things to celebrate. For the first time in many years, we offered Summer Camp, serving 300 campers in a sold-out program that reminds us that

no one does the outdoors better than Girl Scouts. Our commitment to STEM, and an incredible partnership with FPL, brought engineering, coding, and robotics to life for hundreds of local Girl Scouts. A week-long series on mental health connected girls from across the country as they explored important topics around coping with change and taking care of their own bodies and minds. We served almost a thousand Girl Scouts in programs that encourage budding entrepreneurs, and connected older girls with female leaders through an amazing networking and mentoring program.

The pandemic could not stop our Girl Scouts from pursuing high awards, and we welcomed 150 new Bronze Award Girl Scouts and 89 new Silver Award Girl Scouts. Thirty Girl Scouts earned the title, Gold Award Girl Scout. Combined, these girls performed in excess of 10,000 hours of service to their communities and beyond.


We are grateful to the more than 3,200 volunteers who make Girl Scouting possible in our council and congratulate the 103 women and men who were recognized with Volunteer Awards this year. And we couldn't do this important work without our donors—the individuals, corporations, and foundations who recognize that today's investment in our girls will have an impact for a lifetime.

Our optimism for a new year full of promise and purpose abounds. And we know that our success is not measured in membership numbers or cookie boxes, but in the impact we make on the lives of our girls so that they will leave a lasting legacy.

Sincerely,



**Tami L. Donnally, Board Chair**



**Lisa Y. Johnson,  
Chief Executive Officer**



## 2020-2021 BOARD OF DIRECTORS

### CHAIR

Tami Donnally

### VICE CHAIR

Geri Emmett

### SECRETARY

Linda Strutt

### TREASURER

Tula Hudson-Miller

### MEMBERS AT LARGE

Malka Cabral

Beth Galt-Salsamendi

Alexis Ingraham

Deborah Johnson

Kimberly Kisslan

Andrea Levenson

Teana McDonald

Barbara McQuinn

Dannemart Pierre

Nancy Proffitt

LaChish Rigg

Kavita Sahai

Christine Seal

Ofelia Utset

### GIRL ADVISORY BOARD MEMBERS

Linda Saraniti

Hannah Wagner

Samantha White



For over 100 years, Girl Scouts has given girls the tools to lead, break barriers, and become the leaders our businesses, communities, and world require.



# WHO WE ARE

The primary strategic focus in the 2020-2021 membership year was engagement and retention during the pandemic. Volunteers and staff teams continued efforts to reach girls and troops through virtual experiences with some in-person meetings resuming during the spring and summer. A new series of Troop Leader Welcome Webinars were introduced in August to welcome new troop leaders and share essential information to help them start their troops.

Closures and cancelations, and the emergence of the Delta variant due to COVID-19, hindered traditional in-person member recruitment efforts.

In June, GSSEF began hosting in-person recruitment events at outdoor venues, including Camp Telogia, to welcome new girls and families into the movement and demonstrate how girls can meet and engage in Girl Scout activities as we work to recover from the impacts of COVID-19.

## GIRL MEMBERSHIP



**1,698 NEW** (-21% from prior year)  
**+ 4,737 RENEW** (-17.2% from prior year)  
**6,435 TOTAL** (-18.2% from prior year)

## ADULT MEMBERSHIP



**534 NEW** (-45% from prior year)  
**+ 2,671 RENEW** (-16.1% from prior year)  
**3,205 TOTAL** (-23.0% from prior year)



# GIRL SCOUTS WORKS!



## STEM

Girl Scouts are 20% more likely to be digital leaders, compared to non-Girl Scout girls.<sup>1</sup>



## OUTDOORS

97% of Girl Scouts who have attended camp say the experience helped them improve their outdoor skills.<sup>2</sup>



## LIFE SKILLS

Girl Scouts are twice as likely to be community problem solvers and participate in civic engagement activities.<sup>3</sup>



## ENTREPRENEURSHIP

91% of Girl Scouts want to be entrepreneurs in the future!<sup>4</sup>

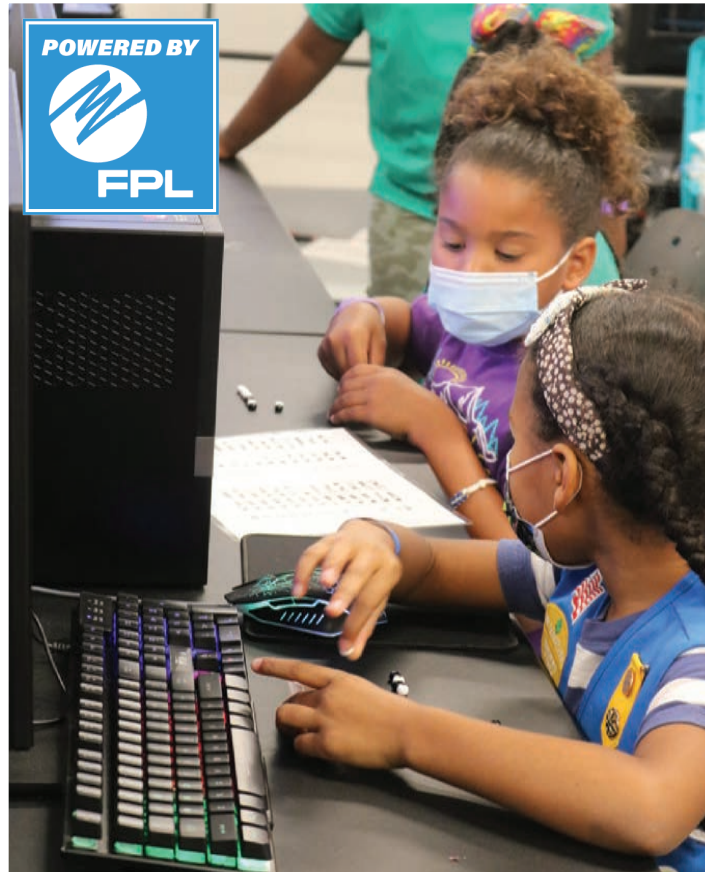
1. Girl Scout Research Institute, *Decoding the Digital Girl: Supporting and Defining Girls' Digital Leadership* (New York: Girl Scouts of the USA 2019)
2. Girl Scout Research Institute, *From Girl Scout Camp to Real-World Champ* (New York: Girl Scouts of the USA 2019)
3. Girl Scout Research Institute, *The Girl Scout Impact Study* (New York: Girl Scouts of the USA 2017)
4. Girl Scout Research Institute, *Today's Girls, Tomorrow's Entrepreneurs* (New York: Girl Scouts of the USA 2019)



**53 events** serving **1,235 Girl Scout and Adult Member participants** (including partner, council-led, and signature).

Imagine her taking on some of the biggest challenges and problems facing our planet—and helping solve them, having a career that’s engaging and well paid, or teaming up with others to invent the future. That future can be a reality, when she explores science, technology, engineering, and math (STEM).

Research shows that although girls are keenly interested in STEM subjects, and excel at it, they don’t pursue it for a variety of reasons. Through Girl Scouts, girls experience how STEM can help them make the world a better place! They become better problem-solvers, critical thinkers, and inspirational leaders, get better grades, earn scholarships, pursue more lucrative career paths, and see STEM as part of a meaningful and successful future. GSSEF STEM events are sponsored in part by Florida Power & Light.



## STEMPALOOZA

May 8, 2021

South Florida Science Center and Aquarium

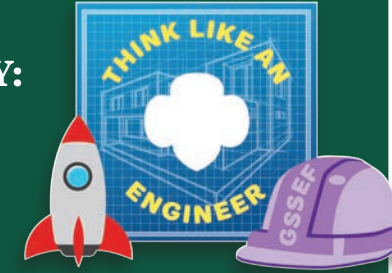
The vision for this event was a charged-up science fair! The event included a display of the “Girl Scouts Take On... Rube Goldberg Machines” competition and STEM program partner booths with hands-on activities. Additionally, we had programs led by engineers at Florida Department of Transportation, a NASA Astronaut provided by AstraFemina, and a Gold Award Girl Scout.

**220 Girl Scout and Adult participants**



## AN OUT OF THIS WORLD JOURNEY: THINK LIKE AN ENGINEER

September 25, 2021  
Virtual



Girl Scouts from across the USA joined Girl Scouts of Southeast Florida as they blasted off for an out of this world journey, with a ‘women in space exploration’ twist!

During the program we learned all about engineering through a lens of space exploration. While earning the Think Like an Engineer Journey the Girl Scouts explored:

- What engineering is
- What careers are available in this field
- The important roles women have played in engineering and space exploration
- The Design Thinking Process
- Three Engineering Design Thinking Activities

**229 Girl Scout participants**



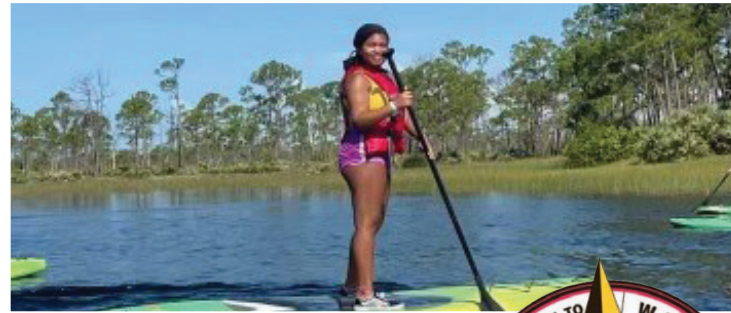
**34 events** serving over **2,600 Girl Scout and Adult Member participants** (including partner, council-led, and signature).

From the backyard to the beach, Girl Scouts has a long and storied history of getting every girl outdoors. Connecting with the great outdoors in a girl-led setting is a big benefit of belonging to Girl Scouts. Studies show that girls today are not spending nearly enough time outside.

Technology and structured activities leave less time for girls to get out and enjoy nature. Girl Scouts have plenty of opportunities to create their own outdoor adventures and develop a lifelong appreciation for nature—whether with her troop, at camp, or with friends and family.

When Girl Scouts get outside, they:

- Discover that they can better solve problems and overcome challenges
- Develop leadership skills, build social bonds, and are happier overall
- Become team players and care more about protecting our environment



**DRIFTING BACK TO CAMP WELAKA**

*July 8-23, 2021*  
*Camp Welaka*



Five years felt like a long time! Following set-backs due to the pandemic in 2020, GSSEF was excited to offer a full, dynamic summer resident camp program in 2021. When July arrived, our gates opened for three sold-out sessions with 300 campers who experienced our beautiful Camp Welaka in new ways. Our Girl Scout camping experience provided girls with a uniquely designed community of peers and caring adults for an experiential education that resulted in meaningful outcomes that build personal competencies—such as self-worth, self-esteem, leadership, decision-making, resiliency, and self-respect.

Research shows us that girls who attend overnight camping programs experience positive development in self-confidence, social integration, nature appreciation, and emotional intelligence skills such as empathy. Plus, they develop healthier attitudes toward physical activity and stronger coping skills too. Girl Scouting is well-known for its outdoor education—and now our council is planning for even bigger summer resident programs for years to come.



**ROCK THE NOC!**

*May 1, 2021*  
*Camp Nocatee*

Our inaugural Rock the Noc family-style festival event at Camp Nocatee was a rocking success! With activities spread around the camp, families enjoyed outdoor games, archery, slingshots, candle making, animal track identification, slacklining, s'mores, and rock painting. We also hosted an Open Mic Jam Session for Girl Scouts to take the stage and perform. Melanie (our Outdoor Crew volunteer) and Cecilia (lead singer of Miss Demeanor) hosted a jam session where Girl Scouts sang songs and even played the ukulele for the crowd.

After the activities concluded, it was time for the grand finale—the live band, Miss Demeanor, took the stage as everyone gathered on camp chairs and blankets in front of Founder's Hall. They played as the crowd enjoyed freshly popped popcorn, outdoor games spread around the Commons, and extra time on the slackline. Sounds of families enjoying Camp Nocatee together filled the trees all day!

Girl Scouts observed that the camp properties provide a venue for more than just traditional camping activities like hiking and canoeing, but can instead be utilized as a grand stage for self-expression and family fun.

**305 Girl Scout and Adult participants**





# LIFE SKILLS

**82 events** serving over **4,158 Girl Scout and Adult Member participants** (including partner, council-led, and signature).

Whether it's by exercising and staying healthy, developing strong relationships with family and peers, advocating on behalf of others, protecting our environment, or exploring careers that can truly change the world for the better, Girl Scouts gain the skills and the inspiration to accept challenges, overcome obstacles, and take the lead.

**90% of girls...** say it is important for them to learn how to manage money.<sup>3</sup>

**87% of girls...** say that it is important to set financial goals.<sup>3</sup>

## BE KIND TO YOUR MIND

*December 7-11, 2020 (Virtual program)  
January 2021 (Virtual Facilitator guide)*

This first of its kind, week-long program focused on Girl Scouts exploring various topics on youth mental health through expert-led teaching and small group discussions. Girl Scouts learned strategies for managing stress and change, while connecting with girls all around the country to discuss these topics. Topics discussed were: What is Mental Health; Coping with Change; Healthy Body, Healthy Mind; Self-Care; and Talking about Mental Health.

This was our first week-long virtual program. There were **27 states** and **2 countries** represented during this program.

**240 Girl Scout participants**  
(Virtual program)

**21 Adult/Troop Leaders**  
(Virtual facilitator guide)



3. *Having It All*, Girl Scout Research Institute, 2013



## ART FEST

*September 25, 2021  
Cultural Council for  
Palm Beach County*



This year's Art Fest program was a brand-new exclusive event for our Girl Scouts. We had two sessions, one for Daisies and Brownies, and the other for Juniors, Cadettes, Seniors, and Ambassadors. Each session had four workshops: pottery, watercolor, mixed media, and poetry. Additionally, Girl Scouts had the opportunity to submit their very own Girl Scout artwork to be displayed in our first ever Girl Scout Art Gallery.

**305 Girl Scout and Adult participants**







# ENTREPRENEURSHIP

46 events serving over 908 Girl Scout and Adult Member participants (including partner, council-led, and signature).

Research shows that girls are actively interested in becoming entrepreneurs, developing financially stable futures, and using their skills to make an impact on the world. Entrepreneurship is a foundational element of the Girl Scout Leadership Experience through which girls develop the attitudes, skills, and behaviors they need to succeed in life. Girl Scouts help girls of all ages develop five skills essential to leadership, success, and life: goal setting, decision making, money management, people skills, and business ethics.

In addition to teaching business and financial literacy skills (saving money, building credit, and minimizing debt), our Entrepreneurship programs, including the Girl Scout Cookie Program, help girls develop skills in team building and problem solving to prepare them for a lifetime of leadership and success.



## BOOTS, BRAVERY, & BRANCHES

May 27-29, 2021

Virtual

The Boots, Bravery, & Branches Virtual Experience provided Girl Scouts with the opportunity to explore the U.S. Armed Forces—Army, Navy, Air Force, Marines, Coast Guard, and the new Space Force, through an activity pack and three live experiences with both active duty and retired military representing all branches. Girl Scouts were also encouraged to take action and celebrate Memorial Day with their family and/or troop.

144 Girl Scout participants

There were 56 councils represented by the out-of-council participants.



## COOKIE ENTREPRENEURS



In 2021, Girl Scouts sold 927,711 boxes of cookies. The per girl average was 265 boxes of cookies. 121 girls reached Extreme Team status, selling 1,021 or more boxes of cookies. 55 of those girls sold more than 2,021 boxes each and were rewarded with a special celebration with CEO Lisa Johnson.

When you see these awesome numbers and stats, know that it directly translates into financial success for the troops as well. **This past year GSSEF troops earned more than \$776,000 in cookie proceeds!** They used these to help fund their program attendance for the rest of the year, re-register their troop for another awesome year of Girl Scouts, take a trip to experience something new, and even re-invest it back into their community through a service project.

## MEET OUR TOP COOKIE SELLERS



**Madison R.** from Troop 11110 sold 8,030 boxes of cookies and was our Top Seller overall for 2021.

**Molly P.** from Troop 20699 was our #2 seller who sold 7,294 boxes of cookies last year.

Our #3 seller was **Amanda K.** from Troop 10442 who sold 6,236 boxes of cookies last year.



# VOLUNTEERS MAKE IT HAPPEN

101 Volunteer Recognition Awards presented in 2021



**22**  
Appreciation Pins



**16**  
Thanks Badges



**3**  
President's Awards



**14**  
Honor Pins



**4**  
Family Awards



**42**  
Volunteer of Excellence Awards



## ENHANCED VOLUNTEER TRAINING

In April 2021, Girl Scouts of Southeast Florida launched our gsLearn virtual training platform. About 20% of our troop leaders completed the required courses thus far, which has enhanced their knowledge by:

- Incorporating the ‘Girl Scout Way’ into thoughts and actions.
- Knowing and applying the Girl Scout Leadership Experience (GSLE) when working with their troop to develop go-getters, innovators, risk-takers, and leaders.
- Creating a safe, inclusive, girl-led space which embraces troop diversity.
- Understanding and executing council specific guidelines around troop operations.
- Guiding their troop into outdoor activities.

In August 2021, we enriched our commitment to volunteer training and learning, by launching a monthly “New Leaders Welcome Webinar” training series, that outlines some basics to help troop leaders feel even more empowered to lead their troop. This webinar series covers a variety of topics including ways to create a successful troop experience, troop finances, Volunteer Toolkit and gsLearn access, navigation to important forms, and much more.

## LIFETIME SERVICE AWARD

### ANDREA LEVENSON

Andrea Levenson is celebrating 33 years as a Girl Scout, both as a Girl Member and as a Lifetime Adult Member. In addition to being the proud mother of a Girl Scout alum, Andrea has served our local Girl Scout community for almost three decades. She has worked in both operational and governance roles, having served as a troop leader and service unit team member in the legacy Girl Scouts of Broward County. She was also a member of the Camp Telogia revitalization effort from 2006-2008 and has been instrumental in our more recent commitment to reopen this wonderful property.

Andrea was a long-standing member of the board of directors of the legacy Girl Scouts of Broward County and served Girl Scouts of Southeast Florida as a member of the board development committee before being elected as a board member last year. She is a founding member of the Daisy’s Circle monthly giving program and Girl Scouts has been the beneficiary of both her family’s personal support and her advocacy on our behalf.



### KARYL BERTRAM

A Lifetime Adult Member of Girl Scouts, Karyl Bertram went “all the way through”, as they say, earning the highest award in Girl Scouts as a member of the Gold Award Class of 1991. She is the proud mother of a Girl Scout and serves our organization at the troop, service unit, council, and national levels. She is a troop leader, serves as a Gold Award Advisor, and has held multiple leadership roles in her service unit—including the Service Unit Volunteer Manager position.

As a certified troop camp trainer, a certified canoe trainer, and a founding member of the GSSEF Outdoor Crew, Karyl passes her love for the outdoors to girls across our council. Nationally, Karyl represented GSSEF as a member of the GSUSA program planning team for the National Council Session, GIRL 2020. She is the recipient of many national adult awards, including the Volunteer of Excellence, the Appreciation Pin, and Honor Pin. And she has received the highest adult award in Girl Scouts, too—the Thanks Badge.





# HIGHEST AWARDS

269 Girl Scouts earned a High Award in 2021.



**Bronze Award Girl Scouts**  
**150 girls total**

*This represents a 46% increase over the previous year.*

Community service hours “given back” through Bronze Award projects: **3,000 hrs**



**Silver Award Girl Scouts**  
**89 girls total**

*This represents a 9% increase over the previous year.*

Community service hours “given back” through Gold Award projects: **4,700 hrs**



**Gold Award Girl Scouts**  
**30 girls total**

*This represents a 20% increase over the previous year.*

Community service hours “given back” through Gold Award projects: **2,600 hrs**



# GOLD AWARD SPOTLIGHT

## SERAPHINA HSIAO

Seraphina wanted to address some of the pervasive stereotypes in male-dominated careers that have historically shut out girls. She was determined to open girls’ eyes and show where they could go in a future workforce. Seraphina created a well-rounded virtual career day featuring 30 successful female professionals in a wide range of traditionally male-dominated careers including: actuary, architect, astronaut, biologist, CEO, clergy, comedian, composer, computer scientist, conductor, doctor, engineer, firefighter, pilot, information technology, law enforcement, meteorologist, outdoor instructor, programmer, and other STEM fields. She was fueled with the knowledge that in 2020, females represent only 2% of the workforce in these fields; and only around 40% of scientists and engineers are female.

Based on the reach of her site, Seraphina has received feedback from more than 1,000 visitors. Additionally, she has partnered with Broward and Palm Beach County schools, as well as various home school groups, in order to expand her project. Visit Seraphina’s website: [virtualcareerday.wixsite.com/gold](https://virtualcareerday.wixsite.com/gold).



**Valeria Amortegui**

Troop 11031  
“Color Me Calm”

**Angelica Arias**

Troop 10909  
“Heart To Art”

**Sarah Bell**

Troop 30143  
“Canines Fur Education”

**Jayna Brunner**

Troop 10514  
“Don’t Judge a Bat by its Cover”

**Eva Freitas**

Troop 21068  
“The Quantum House Gets Crafty”

**Rachel Gottlieb**

Troop 10442  
“Food Allergy Club”

**Elena Hartigan**

Adult, formerly of Troop 20775  
“Destress & Impress: Smooth Sailing Through High School”

**Gabriella Hidalgo**

Troop 10442  
“Gabby’s Shoe Box”

**Seraphina Hsiao**

Troop 10088  
“Virtual Career Day: She Can’t Be What She Can’t See”

**Rose Kores**

Troop 30215  
“MyStory”

**Natalie Kwak**

Troop 10838  
“S.T.E.A.M. for Change”

**Raunak Manchanda**

Troop 20245  
“Education 4 Everyone”

**Tobi Margolis**

Troop 10442  
“Tradition in the Kitchen”

**Elena Martinez**

Troop 21068  
“Preserving Genocide Awareness Amongst Armenian Youth”

**Rebecca Martinez**

Troop 10765  
“Food from the Pantry”

**Courtney McMillan**

Troop 20713  
“Every Cap Counts”

**Ashley Mejia**

Troop 10045  
“Feathered Friends”

**Becca Mizrachy**

Troop 10151  
“Creating a Caring Canine Community”

**Meredith Niksa**

Troop 10393  
“Dolls for Dreams”

**Ashley Parrish**

Troop 10952  
“Business Beyond High School”

**Hannah Phelps**

Troop 20962  
“Nutrition Necessities: Educating Teens on Nutrition Before College”

**Ashley Pratz**

Troop 22222  
“Virtual Band: One World, One Sound”

**Mia Rampersad**

Troop 20834  
“Save Our Sea”

**Sophia Revis**

Troop 11110  
“Historical Artifacts at Lewis Landing Park”

**Brooke Ryerson**

Adult, formerly of Troop 20834  
“Reading Center at Koala Kids”

**Juliana Sequeira**

Troop 30072  
“Raising Service Dog Awareness”

**Hannah Storrs**

Troop 10570  
Project Title: “Your Voice Counts”

**Anna Theissen**

Troop 21068  
“The Butterfly Effect”

**Jordan Winick**

Troop 10442  
“The School Bully: A Bullying Awareness Video”

**Julia Yu**

Troop 10952  
“Keeping the Faith During COVID-19”



# DIVERSITY, EQUITY, AND INCLUSION



**20 Staff Members**  
are actively engaged in DEI learning

**More Than 500 Hrs**  
dedicated to training, knowledge building and information sharing

At Girl Scouts of Southeast Florida, we are committed to an anti-racist environment where all girls feel welcome, encouraged, and empowered and we are doing the work to make that happen. The GSSEF staff team is steadfast in our commitment to raising our own awareness, showing compassion and empathy, and advocating for change. It will take all of us working together to make a true and lasting impact. We are filled with hope knowing that our girls are the generation of changemakers who won't stop until they live in a society that is equal for all people.

The Girl Scouts of Southeast Florida's Equity Team created these statements to guide their actions and further their understanding of this important work.



## OUR VISION

Our vision for Girl Scouts of Southeast Florida is to be just, fair, and inclusive; acting as a catalyst to drive equitable decision-making, resource allocation, and development of policies and practices across the Council.



## OUR PURPOSE

The purpose of the Girl Scouts of Southeast Florida Equity Team is to introduce and implement ideas, information, and experiences that uphold our council's unwavering commitment to diversity, equity, and inclusion.



## OUR GUIDING PRINCIPLES

- We are committed to diversity and to a global and multicultural perspective.
- We actively seek to understand the complex and rich identities of self and others, and to lean into difficult topics related to diversity and inclusion.
- Racism has no place in Girl Scouts. We adhere to and advance an anti-racist approach to the leadership of the girls within our membership.
- We are an inclusive organization. We listen to, learn from, and support all members regardless of race, color, gender identity, sexual orientation, ethnicity, creed, national origin, socioeconomic status, or disability.
- We are an ever-evolving team who prioritizes listening and learning in all that we do.

## DIVERSITY, EQUITY, AND INCLUSION VIRTUAL EXPERIENCE

October 1-30, 2020

Virtual

The Diversity, Equity, and Inclusion Virtual Experience allowed Girl Scouts to explore diversity, equity, and inclusion, as well as topics such as race and ethnicity, gender, the LGBTQ+ community, religion and spirituality, socioeconomic class, and disabilities. Girl Scouts received a self-guided activity pack that included resources, videos, worksheet, etc., and were invited to join GSSEF for nine live experiences with special guests:

- Compass Community Center
- LatinX Technology & Community Center
- Equality Florida
- Tina and Noel Beauvais—Tina B Disability Inclusion Educator
- Andrea Freeman—Senior Director, Head of Inclusion and Diversity at Darden Restaurants

Through this program, Girl Scouts gained a greater understanding of social identity communities, what makes up her their own identity, and how they can educate others.

After completing the Diversity, Equity, and Inclusion Patch Program, Girl Scouts are able to:

- Define social identities that individuals use to characterize themselves and identify negative behaviors surrounding these identity groups.
- Discuss the legislative and judicial actions that have taken place throughout American history related to various identity groups, as well as the current movements advocating for further progress.
- Recognize their personal identities and demonstrate their understanding of diversity, equity, and inclusion to educate others.

**251 participants with over 60% participating from other councils**



**“ [Programs]...are all so powerful for our daughter who has big plans in life and politics with strong advocacy for individuals with disabilities. She has learned so much that we are beyond grateful to you all for all you have done online as we are in New Jersey. ”**

**“ THANK YOU for putting such an AMAZING program together! This has been an amazingly wonderful and educational experience for my daughter (and Girl Scout), Kara, as well as for my husband and me. ”**





# PARTNERING TOGETHER



## PALM BEACH SHERIFF'S OFFICE

Girl Scouts are deeply concerned about the mental health issues that they and their friends are experiencing—and through the Be a Friend First program, provided with funding from the Palm Beach Sheriff's Office Law Enforcement Trust Fund, Girl Scouts of Southeast Florida is here to help. Our country is in the middle of a youth mental health crisis, and girls are at its epicenter. They are struggling to find ways to cope with social and economic stressors, remote schooling, cancelling major life events, racism, and other systemic inequities.

The Be a Friend First curriculum was redesigned to address many of these issues. Girl Scouts found their voice and delved deeper into the ways that they are affected by, and can help prevent bullying behavior. Through the Be a Friend First program partnership with the Palm Beach Sheriff's Office, 150 girls in Palm Beach County have developed a stronger sense of self, developed healthy relationships, resolved conflicts, and advocated for themselves and others.



## J.M. RUBIN FOUNDATION

For five years, the J.M. Rubin Foundation has generously supported Girl Scouts of Southeast Florida. With gifts nearing \$30,000 in total, the foundation is committed to supporting Girl Scouting throughout our council jurisdiction—focusing on providing opportunities to increase educational equity and encourage girls to serve their community. We are grateful for this partnership and the ongoing support from the J.M. Rubin Foundation that has allowed thousands of girls to benefit from our premiere leadership experience.

# RAISING FUNDS FOR GIRLS

Facing the ongoing challenges of the pandemic head on, Girl Scouts of Southeast Florida successfully hosted two hybrid fundraising events that allowed our donors, corporate partners, and volunteers to support our council and to help give the gift of Girl Scouting to any girl who wants the opportunity.



## EMERALD AWARDS

June 4, 2021 | Four Seasons Resort Palm Beach

**Raised: \$93,206**



## GIRL SCOUTS LEAD THE WAY

September 14, 2021 | Signature Grand

**Raised: \$58,634**





## CORPORATE DONORS

Each year Girl Scouts of Southeast Florida receives funding from various corporations throughout South Florida. They recognize that the Girl Scout Leadership Experience is providing girls with the opportunity to develop invaluable life skills allowing all girls take the lead early and often.

## FOR THE FUTURE OF GIRLS

In March 1912, Juliette Gordon Low gathered 18 girls in Savannah, Georgia and began the Movement we know as Girl Scouts. Juliette's outstanding leadership was matched by her stewardship. She converted the carriage house of her home into the first Girl Scout national headquarters and gifted the property to Girl Scouts in her will.

The Juliette Gordon Low Society was established to thank and honor friends of Girl Scouting who, like Juliette, choose to make Girl Scouts part of their legacy and a beneficiary of their estate.

When you make a planned gift to Girl Scouts of Southeast Florida, you bestow the gift of Girl Scouting to future generations of girls. These thoughtful and generous gifts will support and sustain Girl Scouting and will extend your involvement with the Movement beyond your lifetime.

Your legacy will shine through the smiles, the laughter, and the achievements of Girl Scouts for years to come.

We extend our greatest gratitude to the following for making Girl Scouts of Southeast Florida part of their legacies and a beneficiary of their estate plans. Their commitment will ensure that Girl Scouting will continue far beyond their time with the organization.

**Eva & Erik Andersen**  
**Ms. Lammy Askar**  
**Dianne Belk & Lawrence Calder**  
**Ms. Claudet Benton**  
**Ms. Laura Brihn**  
**Ms. Jennifer Busby**

**Ms. Jonna Circe**  
**Ms. Terry Gearing**  
**Ms. Heather Hileman**  
**Lisa & Wayne Johnson**  
**Ms. Felisa Miles**  
**Sara & Bill Nunez**

# MAKING GIRLS A PRIORITY

A very special thank you to everyone who generously supported Girl Scouts of Southeast Florida in 2020-2021. Your financial investments enable us to offer more girls the skills and opportunities they need to excel and lead.



### \$50,000+

The Batchelor Foundation, Inc.  
 Children's Services Council of St. Lucie County  
 Florida Power & Light

### \$25,000-\$49,999

Publix Super Markets Charities, Inc.

### \$10,000 - \$24,999

Broward County Sheriff's Office  
 Bug Bite Thing  
 Healthier Jupiter  
 Hobe Sound Community Chest, Inc.  
 Holy Cross Health  
 Hooters Restaurants of South Florida  
 Joe DiMaggio Children's Hospital at Memorial  
 Palm Beach County Sheriff's Office  
 State of Florida-Department of Education  
 Truly Nolen Pest Control  
 UKG Inc.

### \$5,000 - \$9,999

Baptist Health South Florida  
 Charles D. Bert Fund of the Community Foundation of Broward  
 Girl Scouts of USA  
 J.M. Rubin Foundation, Inc.  
 Kelley Kronenberg Attorneys at Law  
 LaCroix Sparkling Water, Inc.  
 Lawrence A. Sanders Foundation, Inc.  
 Susie & Alan B. Levan Family Foundation  
 Palm Beach State College  
 PNC Financial Services Group  
 Mrs. Lois Pope  
 State Farm  
 UBS Financial Services, Inc.  
 Vero Beach Elks Lodge #1774

### \$2,500 - \$4,999

Aerojet Rocketdyne Foundation  
 Anonymous  
 Duffy's Foundation  
 John Gordon Bull Fund of the Community Foundation of Broward



Little Brownie Bakers  
The Nonprofit Chamber  
Quantum Foundation, Inc.  
Schumacher Automotive  
Sheriff Ric Bradshaw Re-election Campaign  
Ms. Betsey Serak Stehm  
Ms. Linda Strutt  
Mr. Eric Young

### **\$1,000 - \$2,499**

John & Nellie Bastien Memorial Foundation  
Ms. Janet Beets  
Ms. Maria Rosa Catalano  
Community Foundation of Broward  
Ms. Cathy Divosta  
Ms. Tami Donnally  
East Coast Marine  
Fidelity Charitable  
Greenacres Christian Academy  
Illustrated Properties Charities, Inc.  
Ms. Laurie Jennings  
Lisa and Wayne Johnson  
KHS & S Contractors  
Ms. Kimberly Kisslan  
Kiwanis Club of Riviera Beach Foundation, Inc.  
The Law Offices of David Ben Israel, Inc.  
Ms. Melissa Madani  
Mr. Daniel Maret  
Gina Rose Montalto Memorial Foundation, Inc.  
Ms. Danielle Moore  
Ms. Donna Mulholland  
Ms. Nancy Proffitt  
Chief Sonia Quinones  
Republic National Distributing Co  
Ms. Alina Scarbossa  
Dr. Penny Shaffer  
Maureen and Thomas Shea  
Ms. Stephanie Sokolove  
Virginia and Perry Spencer  
Ms. Lori Ebinger Sullivan  
Tito's Handmade Vodka  
Mrs. Ofelia Utset and Mr. Tom Kodadek  
Valley Bank  
Vozzcom, Inc.  
**\$500 - \$999**  
Bedner's Farm Fresh Market  
BJ's Wholesale Club Inc.  
Broward Motorsports  
Ms. Lorna Brown-Burton  
Ms. Rosemary Burns  
Ms. Malka Cabral

Carman Chris Auto Consulting LLC  
Charities Aid Foundation of America  
Coral Springs Community Chest  
Ms. Geri Emmett  
Florida Community Health Centers, Inc.  
Ms. Carol Gorbecki  
Ms. Jasmin Green  
Mr. John C. Hampp  
Ms. Debbie Hanley  
Mr. Lee Johnson  
Keys Gate III Land Trust  
Kumon Math and Reading Centers  
The Huntt LaFrance Fund  
Mrs. Andrea and Mr. Alan Levenson  
LJR Training & Coaching  
Ms. Allyson Maharaj  
Ms. Lauren Mathers  
Ms. Beverly Turner Moore  
Ms. Regina Mullen  
Robert Nichols Insurance Group  
Ms. Elizabeth Pearce  
Ms. Kavita Sahai  
Saltz Michelson Architects  
Ms. Christine Seal  
Mr. Chuck Shaffer  
Signature Flight Support  
Ms. MaryAnn Stetson  
Teamsters Local 1150  
Mr. and Mrs. Doug Thompson  
Top-Notch Delivery Service, LLC  
Truist/Frontstream/YourCause/Benevity  
Ms. Denise Valz  
Ms. Susan Wagner  
The Women's Club of Valencia Pointe  
Ms. Nicole Zeien

### **\$100 - \$499**

22Mods4All, Inc.  
Ms. Carolyn Adler  
All American Welding & Maintenance  
All Points Mobile Shredding  
AmazonSmile Foundation  
American Legion Auxiliary Unit 164  
Ms. Angela Amorosi  
Scott and Jacqueline Anselmo  
Around the Clock Flooring  
Ms. Pam Ashworth  
Ms. Lammy Askar  
Ms. Lisa Bachman  
Mary Lee and Richard Bastin  
Ms. Karen Baum  
Blue Aerospace  
Anita and Kalman Blumberg  
Patricia and Casey Boyer  
Ms. Dorothy Bradshaw

Mr. Michael Bubis  
Bruce and Cheryl Campbell  
Barbara and Joseph Charles  
Ms. Giselle Cheminand  
Ms. Nancy Chick  
Chili's Restaurant  
Chipotle Mexican Grill  
Mrs. Beverly Ciapponi  
Ms. Jonna Circe  
City Towing, LLC  
Clear Pools Maintenance, Inc.  
Coastal Planting Service, Inc.  
Cook Shell Contractors, LLC  
The Corradino Group  
Ms. Mary Costantino  
Mr. Michael Courembis  
Ms. Heather Criddle  
Ms. Doris Curtis  
Ms. Mimi Davis  
Ms. Vivien Dearth  
Death or Glory Bar  
Delray Awning, LLC  
Mr. Brooks Dexter  
Richard and Julia Diasio  
Mr. Al DiCalvo  
Dignity Memorial  
Mrs. Brenda and Mr. William Duffy  
Ms. Dorothy Dull  
Donna and Lee Dunbar  
David and Marjorie Dunn  
Mr. Ken Dupont  
Mr. Richard Dupree  
Mr. and Mrs. James Eigel  
Elks Lodge #2658 Motorcycle Riders Club  
Jaclyn and Jason Feinberg  
Ms. Paula Fijalkowski  
Ms. Nicole Fingerhut  
Flightline Drug Testing  
Florida Acquisitions & Appraisal, Inc.  
Ms. Donna Florio  
Fort Lauderdale Women's Club  
Ms. Noelle Froehlich  
David and Pam Fryburg  
Ms. Joann Gallagher  
Ms. Beth Galt-Salsamendi  
Game of Axes, Inc.  
Joel and Esta Gardberg  
Garden Auto Care  
Gardens Towing  
Tana and Tim Gaskill  
Ms. Melinda Glasco  
Ms. Kate Goosey  
Ms. Tammy S. Gordon  
Ms. Lori Grahn  
Mr. John Graybill  
Ms. Sandra Gregersen

Mr. Michael Grischy  
Ms. Carol Groves  
Ms. Erika Guay  
Ms. Allison Hackett  
Mrs. Elle and Mr. Bernard Harrigan  
Ms. Heather Hileman  
Ms. Sylvia Reynolds Hill  
Ms. Aileen Hoguet  
Ms. Maureen Holt  
Ms. Tula Hudson-Miller  
Ms. Kathy Hummel  
Interstate Towing, Inc.  
Intradeco Apparel, Inc.  
J&J Fox, LLC  
Ms. Marsha Jacobson  
JM Family Enterprises, Inc  
Jupiter Technical Corp  
Kelly's Landing  
Ms. Marie Kilpatrick  
Greg and Pat Kissel  
Ms. Cynthia Kruempel  
Ms. Ana Languasco  
Ms. Anna Laoretti  
Ms. Linda Linder  
Ms. Gail Lunsford  
Macavage Financial Services  
Mr. Thomas Marcisofsky  
Ms. Diane Marks  
Ms. Natasha Marques  
Ms. Christi Matthews  
Ms. Carol McCarthy  
Mr. Kevin McCarty  
Mrs. Jimmie Vee McCoy  
Ms. Cindy McHeran  
Ms. Vicki Miller  
Mr. Gerald Miller  
Miller Legg  
Ms. Gail Nelson  
Ms. Rhonda Lang Netzel  
Ms. Marilyn Norman  
Mrs. Sara and Mr. Bill Nunez  
Ms. Susan Oberdorfer  
Mr. Brian Olwell  
Ms. Amy Siegel Oran  
Jenat and Adria Papademetriou  
Ms. Ava Parker, J.D.  
Ms. Aleta Pasterkiewicz  
Mr. and Mrs. Stephen Perrin  
Ms. Sophia Perry  
Ms. Wendy Kreps Peterson  
Ms. Joyce Pickel  
Ms. Dannemart Pierre  
Mrs. Cathleen Plefka  
Post Insurance & Financial, Inc.  
Ms. Jodi Potter  
Ms. Nancy Powell  
Priority Towing, Inc





Professional Display Ads, Inc.  
 Ms. Danielle Ramirez  
 Mr. Bruce Ramsey  
 Ms. Marsha Reardon  
 Ms. Michelle Martinez Reyes 🌿  
 Mr. Robert Reynolds  
 Ms. Brielle Rivera 🌿  
 Ms. Jo Ann Rogers  
 Rotary Club of Davie/Cooper City  
 Ms. Elisa Royall  
 Ms. Tori-Lynn Saraniti  
 Ms. Cindy Sattizahn  
 Mrs. Rebecca and Mr. Dan Schaffer 🌿  
 Kimberly and Kevin Schnitzius  
 Mrs Francine Scuder  
 Karl and Sandi Shechtman  
 Judith Lightfoot and George Sigler  
 Paul and Joanne Simoneau  
 Ms. Kristin L. Skarie 🌿  
 St. Andrews Lutheran Church  
 Ms. Lauren Sterlacci  
 Herb and Lynn Stoots  
 Dr. Nirit Swerdloff  
 Talco Partners  
 Mrs. Gladys and Mr. Thomas Thompson  
 Tijuana Flats  
 Ms. Cindy Tindell  
 Mr. Erol and Ms. Susan Tuzcu  
 United Methodist Women of  
 Community United Methodist Church  
 United Way of Palm Beach County  
 Laurie and Allen Vann  
 The Vape Queen  
 Mrs. Jeri Walters  
 Charles and Diane Wasserman  
 Charles and Catherine Weeks  
 Westway Towing of Palm Beach  
 Ms. Betty White  
 Ms. Charon Whitesell  
 Whole Foods  
 Ms. Janet Wincko 🌿  
 Mr. Steven Woodby 🌿  
 Ms. Ashlee Woodruff 🌿  
 Ms. Judith Joyner Wright  
 Ms. Lisa Wulf 🌿

Kenneth and Karen Anthony  
 Ms. Pam Arthur  
 Janell and Mark Averett  
 Ms. Kiley Baggett  
 Ms. Elena Baldwin  
 Ms. Gena Barbera  
 Mr. Kevin Basore  
 Ms. Stephanie Battjer  
 Ms. Dennise Beal  
 Mr. Vincent Beckerman  
 Nancy and Dale Bellows  
 Ms. Susan Bennett  
 Ms. Kathy Benson 🌿  
 Ms. Donna Bills  
 Ms. Claire Birdsall  
 Wendy and Jeffrey Birnbaum  
 Mrs Carole Bittman  
 Ms. Cheryl Boedicker  
 Mr. Jay Boodheshwar  
 Walter and Genevieve Boron  
 Ms. Tricia Borsch  
 Ms. Bonnie Brent  
 Ms. Nicole Brewer  
 Ms. Catherine Ford Brister  
 Mrs Marian Brovero  
 Ms. Mrianane Brown  
 Mr. Robert Brown  
 Ms. Arleen Van Brunt  
 Drs. Duane and Melise Bunker  
 Ms. Becky Burton  
 Ms. Christina Cadem  
 Mr. Bryan Caletka  
 Tara and Jorge Cardoso  
 Ms. Andrea Carlsen  
 Nils and Margaret Carlson  
 Ms. Annette Carmichael  
 Ms. Crystal J. Castillo  
 Ms. Michelle Castillo  
 Ms. Joanne Chalom  
 Ms. Katherine Chamochumbi  
 Mr. Mike Chaney  
 Ms. Antoinette Charles  
 Debora and Mario Chavez  
 Ms. Jean Chudanov  
 Ms. Bonnie Claey  
 Karen and Ken Clark  
 Dorothy and Jeffrey Cochran  
 Ms. Jane Cohen  
 Roxana and William Coleman  
 Ms. Barbara Colombrita  
 Community Bag Program  
 John and Charlotte Conlon  
 Mr. David Cook  
 Ms. Mary Cooney  
 Michael and Joan Corbo  
 Jack and Darlene Coverdale  
 Ms. Michelle Sturges Craig

Ms. Linda Crawford  
 Linda and James Crist  
 Ms. Melissa Croland  
 Ms. Joan Cromer  
 Ms. Patricia Crowley  
 Ms. Ashley Curley  
 Ms. Suzanne W Dalesandro  
 Rosemary and Thomas Daly  
 Mr. Kevin Damaso  
 Ms. Suzanne Dannahower  
 Ms. Sheryl Davidoff  
 Stanley and Nancy Davis  
 Ms. Dina Decker  
 Ms. Peguy Delva  
 Denise and John Demase  
 Ms. Marilyn Jean Dempsey  
 Lorraine and Mike DeStefano  
 Mrs. Kathleen Dominguez  
 Ms. Maria Dominguez  
 Ms. Jeanette Donohue  
 Ms. Marion Downing  
 Ms. Justine Drew  
 Ms. Robyn Dunkelberger 🌿  
 Ms. Kami Dykes  
 Ms. Patricia Eckert  
 Ms. Donna Edwards  
 Ms. Laura Edwards  
 Alex and Sarah Emmett 🌿  
 Ms. Tracy S. Fairhurst  
 Ms. Judith Fincke  
 Mrs. Marcia Fishman  
 Ms. Ann D. Fleming  
 Kim and Richard Fohr  
 Ms. Terri Freeman  
 Mr. Melvin Friedberg  
 Frontstream  
 Ms. Gabriella Gaita 🌿  
 Mary and Robert Gambolati  
 Mrs. Maribel Garcia  
 Ms. Charmaine Gatlin  
 Leona and Craig Gaunya  
 Mr. and Mrs. Sandy Genet  
 Sandra Hurst and David Gettleson  
 Mr. Robert Gibson  
 Ms. Barbara Gilbert  
 Mr. Keith Girten  
 Ms. Ellen Gold  
 Martin and Irene Goldsmith  
 Ms. Karen Goldstein  
 Ms. Jennifer Gonzalez  
 Ms. Tracy Goodson  
 Ms. Janet Gordon  
 Mara and Mark Goron  
 Mr. Michael L. Grandelli  
 Maryl and Peter Grandsire  
 Mrs Beverly Gregory  
 Ms. Utske Van Gunst

Ms. Helaine Gurgold  
 James and Judith Hamel  
 Mrs Frances Hamrick  
 Ms. Lorraine Harris  
 Ms. Nancy Harris  
 Elizabeth and Garth Harrison  
 Ms. Karen Heidtman  
 Ms. Valerie Hellriegel  
 Madeline and James Henderson  
 Judith and Michael Herman  
 Zuzel and Roger Hernandez  
 Ms. Loretta Hicks-Martinez  
 Ms. Patricia Hindle  
 Ms. Leatrice Hoffman  
 Mrs Debbie Hogan  
 Ms. Sally Holmes  
 Mary Ann and John Holper  
 Ms. Jill Holstein  
 Ms. Kaley Homan 🌿  
 John and Mindy Hotchkiss  
 Ms. Lezley Hsiao  
 Mrs. Robbie Hunt  
 Ms. Sue Hutcheon  
 Mr. Anthony Imperatrice  
 Ms. Christie Iribarren  
 Mr. Mark Jarrett  
 William and Rhoda Jenkins  
 Jerry Smith Tile, Inc.  
 Ms. Deborah Johnson  
 Sandra and Robert Johnson  
 Joseph and Judy Kaczmarek  
 Mr. Elliot Kalman  
 Mr. Robert Kaminski  
 Leonard and Roslyn Katz  
 Ms. Joanne Kauffmann  
 Ms. Susan M. Kelly  
 Ms. Tara Kendall  
 Ms. Donna Kern  
 Patricia and Robert Killey  
 Ms. Laurie Kinder  
 Ms. Susan Knopick  
 Ms. Jennifer Knowles  
 Ms. Carol Kohn  
 Mrs. Nikki Kolleda  
 Judith and Michael Koretzky  
 Ms. Nancy Kosa  
 Ms. Chelsea Krebs  
 Ms. Robin Kriberney  
 Chris and Claudia Labonne  
 Ms. Patricia T. Labonne  
 Ms. Mary Lamothe  
 Ms. Carol-Ann Lansdale  
 Ms. Patricia LaValley  
 Mr. Kenneth Lenz  
 Mrs. Susan M. Levin  
 Claire and Melvin Levine  
 Ann Renee and Corey Lewis

**\$1 - \$99**

Pamela and Jose Acevedo  
 Ms. Irene Adjan  
 Ms. Praneetha Akondi  
 Ms. Marjorie Albertson  
 Ms. Aimara Alfonso  
 Ms. Alexandra Alfred 🌿  
 Debra and Wayne Alloy  
 Mr. Anthony Anderson





Ms. Susan Lindsay  
 Ms. Cynthia Lohse  
 Margaret and Joseph Lombardi  
 Ms. Anita Lorentz  
 Carol and William Lowe  
 Loxahatchee Ice Cream Co.  
 Elizabeth and Edward Lusky  
 Ms. Jeana Lutz  
 Joanne and Charles Mailat  
 Mr. Stephen Makela  
 Ms. Sheilah Malamud  
 Candice and Richard Maloney  
 Ms. Darlene Marohnic  
 Mr. Tim McAlice  
 Mary Ann and James McCants  
 Ms. Shirley McCulloch  
 Ms. Joan McDermott  
 Mr. Jim McNey  
 Ms. Sally Medaris  
 Ms. Amy Menger  
 Ms. Christine Miller  
 Ms. Roberta Miller  
 Ms. Leta Molnar  
 Frank and Joanne Morgan  
 Ms. Jennifer Moskow  
 Mrs. Barbara Murray  
 Richard Barrett and Kathleen Nash  
 Mr. John Natiello  
 Ms. Sandy Naylor  
 Ms. Mistie Neitzel  
 Ms. Cynthia Nettifee  
 Ms. Carol Norris  
 Ms. Trecia North  
 Ms. Destiny Oakley  
 Ms. Linda Oenbrink  
 Nel-Mare and Louis Oosthuizen  
 Ms. Kelsey Otocky  
 Mrs. Linda Palladino  
 Ms. Jo Ellen Panton  
 Mrs. Linda Panzarella  
 Linda and Barry Paraizo  
 Ms. Jimmie Partridge  
 Ms. Marla Pasternack  
 Ms. Laura Pattillo  
 Ms. Kathy Paviolitis  
 Ms. Carol Payne  
 Ms. Anne Pearce  
 Susan and David Perham  
 Thomas Ledwell and Suzanne Petrela  
 Ms. Linda Pevar  
 Kathleen and Michael Phelan  
 Ms. Kendra Phillips  
 Ms. Ashley Pinnock  
 Joyce and Mario Portillo  
 Ms. Heather Pratt

Ellen and Harvey Ptashek  
 Mrs. Louise Racela  
 Mr. Santo Rannazisi  
 Ms. Robin Redden  
 Ms. Stephanie Ressler  
 Ms. Michelle Richards  
 Ms. LaChish Rigg  
 Right Management  
 Ms. Angie Riserbato  
 Joan and Victor Rivas  
 Ms. Darlene Rivera  
 Ms. Susan Joy Rizzolo  
 Ms. Nancy Rizzuto  
 Ms. Carol Robbins  
 Ms. Laura Rodino-Posenato  
 Mr. Barry Roffer  
 Hollond and Stephen Romaine  
 Ms. Lorin Romeo Romay  
 Amanda and Connie Romine  
 Ms. Victoria Rominger  
 Ms. Linda Rosi  
 Mrs. Benita Ross  
 Ms. Lisa Rubin  
 Mr. John Rupertus  
 Ms. Lisa Russell  
 William and Trish Ryno  
 Ms. Carole Sackett  
 Mr. Glenn Samuels  
 Ms. Patricia Santiago  
 Ms. Hedy Sarbey  
 Sharleen and Paul Scarafia  
 Lois and Myron Schaffer  
 Ms. Sally Ann Schillizzi  
 Ms. Meredith Schoenherr  
 Mrs. Felice Schonberg  
 Ms. Ruth Ann Scire  
 Ms. Sarah Seckman  
 Ms. Jenna Setticasi  
 Mrs. Edith Seveny  
 Ms. Melissa Sexton-DeLisa  
 Ms. Annette Seydlitz  
 Dianne and Eric Shangold  
 Ms. Stacy Shannon  
 Dr. and Mrs. Bert D. Shapiro  
 Ms. Joyce C. Shraim  
 Ms. Susan Sieg  
 Ms. Luna Silberman  
 Mrs. Linda Silver  
 Albert and Linda Simbritz  
 Drs. Lance and Jodi Simkins  
 Ms. Marcia Skarie  
 Mr. and Mrs. Cliff Smallwood  
 Melissa and David Smiley  
 Ms. Babette Smith  
 Ms. Laura Smith  
 Terri Smith  
 Ms. Rebecca Socol

Mr. Lynn Solem  
 Ms. Allyssa B. Sophie  
 Mr. Michael Spath  
 Ms. Diann Spencer  
 Marlene and Patrick Sponsler  
 Nancy and David Stainback  
 Mr. Gary Steger  
 Ms. Bonnie Stein  
 Ms. Karen Stephens  
 Ms. Linda Stewart  
 Ms. Sandra Stewart  
 Kathleen and Ronald Stilwell  
 Martha and Allan Stollberg  
 Mrs. Vanessa Struve  
 Ms. Stefanie Sugar  
 Arthur and Bernadette Swaine  
 Ms. Becky Swicer  
 Ms. Maria Tambasco  
 Ms. Chantule Taylor  
 Taylor Creek Optical, Inc  
 Lila and Andrew Terry  
 Roberta and Arved Tetzlaff  
 Ms. Melinda Thamm  
 Ms. Deedra Thompson  
 Linda and Gerald Thompson  
 Ms. Patricia Tickner  
 Ms. Joan Torio  
 Ms. Janice Tourangeau  
 Mr. Terry Treat  
 Mr. Thomas Troiano  
 Mr. David Tuma  
 Ms. Mary Ujhelyi  
 Mr. Danny Underwood  
 Ms. Maida Velez-Kopet  
 Ms. Tanya Vohar  
 Ms. Kanisha Walker-Greaves  
 Mr. John Walter  
 Ms. Lisa Ward  
 Ms. Carol Warner  
 Ms. Martha Warwick  
 Ms. Kim H. Webb  
 Richard Whittall and Denise Weigand  
 Martha and Steven Weinstein  
 Mrs. Trudy Weitzer  
 Michael and Sally Whalen  
 Ms. Sheila White  
 Craig and Nancy Wilks  
 Mr. and Mrs. Frank Williams  
 Joseph and Maureen Winkler  
 Ms. Marsha Winkler  
 Mrs. Anna Jo and Mr. David Wolak  
 Ms. Amy Woods  
 Mr. Richard Worsena  
 Ms. Karenisa Wright  
 Mr. John Wrote  
 Ms. Janet Young  
 Ms. Carol Yurillo

Ms. Arielle Zadik  
 Dr. Marilyn Zaragoza  
 Ms. Shirley Ziegler  
 Ms. Betty Zulauf



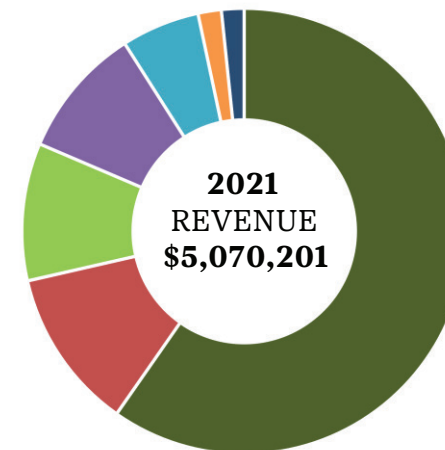




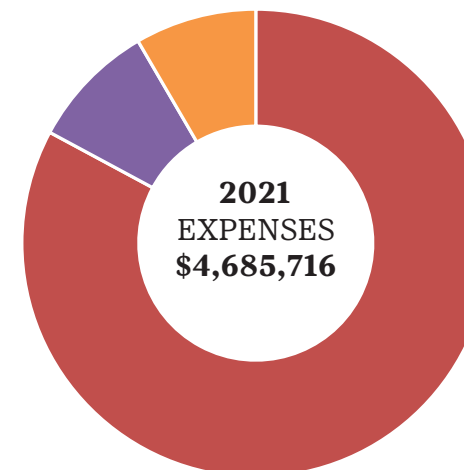
# STATEMENT OF ACTIVITIES

## GSSEF FINANCES

For the Year Ended September 30, 2021



60%	<b>Product Sales Program, net</b>	<b>\$3,028,519</b>
11%	<b>Public Support</b>	<b>\$592,621</b>
10%	<b>Investment Returns</b>	<b>\$506,279</b>
9%	<b>PPP Forgiveness</b>	<b>\$484,300</b>
6%	<b>Program Fees</b>	<b>\$288,956</b>
2%	<b>Other income</b>	<b>\$85,929</b>
2%	<b>Council Shop Sales, net</b>	<b>\$83,597</b>



83%	<b>Program Services</b>	<b>\$3,882,203</b>
9%	<b>Management and General</b>	<b>\$410,030</b>
8%	<b>Fundraising</b>	<b>\$393,483</b>

ASSETS		LIABILITIES AND NET ASSET	
Cash and Investments	\$7,677,383	Current Liabilities	\$560,417
Restricted Cash & Investments	\$131,920	Long-Term Debt	\$1,115,317
Other Current Assets	\$299,120	<b>TOTAL LIABILITIES</b>	<b>\$1,675,734</b>
Property and Equipment (net of depreciation)	\$5,004,782	<b>NET ASSETS</b>	<b>\$11,437,471</b>
<b>TOTAL ASSETS</b>	<b>\$13,113,205</b>	<b>TOTAL LIABILITIES &amp; NET ASSETS</b>	<b>\$13,113,205</b>

\*The audited financial statements are located on our website at [gssef.org](https://gssef.org).



Girl Scouting builds girls of courage, confidence,  
and character, who make the world a better place.



  
girl scouts  
of southeast florida

**Administrative Headquarters**

6944 Lake Worth Rd.  
Lake Worth, FL 33467

(561) 427-0177 | [www.gssef.org](http://www.gssef.org)